

# Oracle Construction and Engineering Intelligence: Analytics

Construction and Engineering Analytics delivers enterprise-wide business insights that transform how you execute and share project information.

Construction organizations and capital project owners manage complex, high-stakes projects requiring visibility into performance across their portfolios. Generic business intelligence tools aim to address this need but often require costly IT resources, time-consuming data extractions, integrations, and lack specific construction and engineering industry knowledge. Teams can end up wasting valuable resources struggling to connect fragmented data from multiple systems, recreating basic reporting and analysis instead of leveraging pre-built proven industry best practices.

Oracle Construction and Engineering Analytics incorporates pre-built data pipelines to industry leading Oracle Construction and Engineering applications, pre-built semantic model and associated metadata for easy reporting incorporating years of best-practice metrics, key performance indicators (KPIs), and dashboards. This industry-built solution enables all project participants and stakeholders to make informed business decisions leading to on-time, under budget, and within scope project success. Project performance is measured using leading indicators, trends, statistics, graphs, and geospatial maps, all encompassed with AI in an intuitive, easy to use self-service platform.

Additionally, leverage the power and flexibility of Construction and Engineering Analytics to create bespoke reports, visualizations, and KPIs - you have full control to configure the solution to meet and deliver insights unique to your business.



## Overview

Construction and Engineering Analytics is part of Oracle Construction and Engineering Intelligence's portfolio of solutions, built to address the key areas of project risk.

Enhanced by Oracle AI, Construction and Engineering Analytics enables users to transform project data into meaningful insights without the need for technical support to build and maintain infrastructure.

## Key Benefits

- Fast time to value with prebuilt data connectors to Oracle Primavera Unifier, P6 data sources and a fully automated extract-transform-load (ETL) ingestion process.
- Effortlessly create and share visualizations tailored to the unique needs of your organization or use pre-built dashboards based on industry best-practice metrics, KPIs, reports and scorecards.
- Descriptive analytics help make sense of complex information - spot outliers, and take corrective actions to drive continuous improvement, leveraging state-of-the-art AI capabilities.
- Your Construction and Engineering Intelligence Hub: Holistic data and ease of collaboration provides improved project visibility, helps identify trends, risks, and anomalies and enables faster and more informed decision making.

Transform project management with Construction and Engineering Analytics, a comprehensive AI driven decision support platform that centralizes all your project information while breaking down data silos.

### Simply Ask

Simply ask questions about your data to instantly generate visualizations and narratives about your project data —no complex query building required. Analytics’ conversational assistant transforms complex analytics into actionable intelligence in seconds.

### Auto Insights: Instant Data Intelligence

Transform raw data into actionable insights instantly with Auto Insights. At the click of a button this powerful feature automatically analyses your data and generates relevant visualizations without any manual configuration.

Auto Insights serves as your perfect starting point for deeper analysis, allowing you to efficiently build comprehensive dashboards that reveal the complete story behind your construction data.

### Data Narrative and Contextual Insights

Instantly add a narrative to a dashboard to further explain a visual. AI summarizes the selected fields to explain the insights generated/rendered. Using contextual insights, compare selected data in a visualization with related data to get the full picture and a deeper understanding of the data.

Oracle Analytics is a leader in Gartner’s Magic Quadrant for Analytics and Business Intelligence Platforms.



Scan to learn more or visit:  
[engage.oracle.com/ceanalytics](https://engage.oracle.com/ceanalytics)

Call +1.800.ORACLE1 or visit [oracle.com](https://oracle.com). Outside North America, find your local office at: [oracle.com/contact](https://oracle.com/contact).

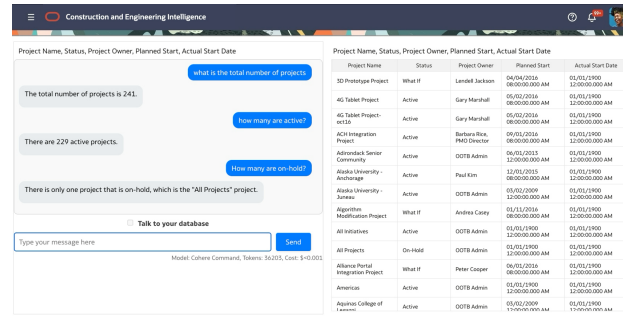
[blogs.oracle.com](https://blogs.oracle.com)

[facebook.com/oracle](https://facebook.com/oracle)

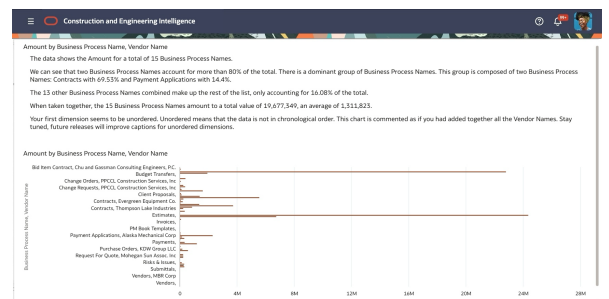
[twitter.com/oracle](https://twitter.com/oracle)

Copyright © 2025, Oracle and/or its affiliates. This document is provided for information purposes only, and the contents hereof are subject to change without notice. This document is not warranted to be error-free, nor subject to any other warranties or conditions, whether expressed orally or implied in law, including implied warranties and conditions of merchantability or fitness for a particular purpose. We specifically disclaim any liability with respect to this document, and no contractual obligations are formed either directly or indirectly by this document. This document may not be reproduced or transmitted in any form or by any means, electronic or mechanical, for any purpose, without our prior written permission.

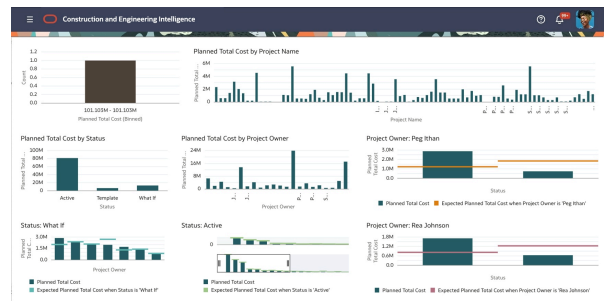
Oracle, Java, MySQL, and NetSuite are registered trademarks of Oracle and/or its affiliates. Other names may be trademarks of their respective owners.



Talk to your database, our conversational assistant will deliver instant insights about your project data.



Instantly add a narrative to a dashboard to further explain a visual. AI summarizes the selected fields to explain the insights generated.



Auto insights automatically analyse datasets and generate relevant visualizations without any manual configuration – at the click of a button.